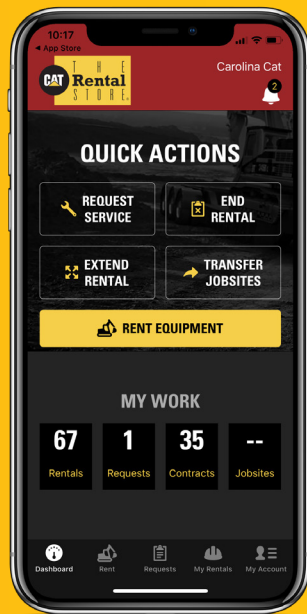


# RENTAL PRODUCT LINE

EVERYTHING YOU NEED TO GET THE JOB DONE





# CAT RENTAL STORE **CUSTOMER PORTAL**

**EASILY ACCESS & MANAGE YOUR RENTALS  
ANYTIME, ANYWHERE**

Whether you know what the job requires or something changes along the way, the Cat Rental Store Customer Portal is built to meet your rental needs. We're here when you need us with tools and equipment, expertise and advice, and service wherever the work may take you. The portal makes doing business with the Carolina Cat Rental Store even more accessible, easy and convenient.

## **WITH A CUSTOMER PORTAL ACCOUNT, YOU WILL BE ABLE TO:**

- Access 24/7 via website or app
- Locate the closest Carolina Cat Rental Store location to your jobsite
- Search for equipment and view rental rates
- Request equipment quotes
- View and download contracts and invoices
- View all equipment you have on rent
- Transfer equipment between jobsites
- Request on-site service
- Extend or end rentals
- Text us through the messaging feature



## **SIGN UP TODAY!**



[CATRENTALSTORE.COM/CAROLINA](https://CATRENTALSTORE.COM/CAROLINA)



**800.277.1212**

**RENT TODAY! 800.277.1212**



APPLY FOR CREDIT



# WHY RENT FROM CAROLINA CAT?

## THE LARGEST SELECTION

Carolina Cat has everything you need to get the job done right. Our wide range of industrial, commercial and construction rental equipment includes Cat machines, aerial lifts, lift trucks, power generation equipment and more! Whatever the need, we have a solution for your operation. Our professional team of experts are ready to partner with you to keep your job site up and running.

## THE BEST SUPPORT

24-hour emergency rentals and 24/7 field service means we're there when you need us. Our factory-trained technicians and Rental Store staff are among the most experienced and knowledgeable in the industry. We offer operator training and equipment certification to ensure that your fleet works to its full potential, supporting your business from top to bottom.



FAMILY OWNED AND OPERATED SINCE 1926



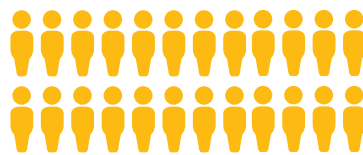
LARGEST EARTHMOVING FLEET IN NORTH CAROLINA



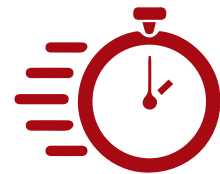
SERVICE PERFORMED BY CAT CERTIFIED TECHNICIANS



EMERGENCY SERVICE



LEGENDARY PRODUCT SUPPORT



TIME-SAVING DELIVERY OPTIONS



OPERATOR TRAINING AVAILABLE



RENTAL LOCATIONS NEAR YOU



3D GPS TECHNOLOGY EQUIPPED SOLUTIONS



PREVENTIVE MAINTENANCE INCLUDED



# AERIAL EQUIPMENT

## ELECTRIC BOOM LIFTS

Model	Platform Height	Horizontal Reach	Weight
Genie Z30/20N*	30 ft	21 ft 5 in	17,183 lb
Genie Z34/22N*	34 ft	22 ft 3 in	11,415 lb
JLG E400 AJPN*	40 ft	22 ft 5 in	14,900 lb
Genie Z40/23N*	40 ft	22 ft 8 in	15,230 lb

\*Non-marking tires



## ROUGH TERRAIN BOOM LIFTS

Model	Platform Height	Horizontal Reach	Weight
JLG 340 AJ	33 ft	19 ft 11 in	10,175 lbs
MEC 34J	34 ft	26 ft	8,000 lbs
Genie S40 4WD	40 ft	31 ft 8 in	14,124 lb
Genie Z45/25	45 ft	25 ft	16,360 lb
Genie S45 4WD	45 ft	36 ft 8 in	16,300 lb
Genie S60X 4WD	60 ft	50 ft 10 in	22,930 lb
Genie S60 TraX	60 ft	50 ft 10 in	26,840 lb
Genie Z60/34	60 ft	36 ft 6 in	22,520 lb
Genie S65 4WD	65 ft	56 ft 2 in	25,160 lb
Genie Z80-60 PWR	78 ft	60 ft	37,525 lb
Genie S85 4WD	85 ft	76 ft 6 in	39,500 lb
JLG 860 SJ	86 ft	75 ft	36,888 lb
JLG 1200 SJP	120 ft	75 ft	40,900 lb
JLG 1350 SJP	135 ft	80 ft	44,750 lb
Genie ZX-135/70	135 ft	69 ft 9 in	46,500 lbs



## HYBRID BOOM LIFTS

Model	Platform Height	Horizontal Reach	Weight
Genie Z45-FE	45 ft 6 in	25 ft	16,800 lb
Genie Z60 FE	59 ft 7 in	36 ft 7 in	17,100 lb
Genie S-60 FE	61 ft	40 ft 6 in	17,750 lbs



**RENT TODAY! 800.277.1212**

## ELECTRIC SCISSOR LIFTS

Model	Platform Height	Weight
Hy-Brid PO-1430 Light Weight	14 ft	1,645 lb
Hy-Brid PO-1930 Light Weight	19 ft	1,985 lb
MEC Micro 19	19 ft	2,280 lb
Genie GS1930	19 ft	3,209 lb
MEC Micro 26	26 ft	4,190 lb
Skyjack SJ3226	26 ft	4,190 lb
Genie GS3246	32 ft	5,211 lb
MEC 3346SE	32 ft	5,670 lb
Skyjack SJ4632	32 ft	5,075 lb
MEC 4046SE	39 ft	7,140 lb
Genie GS4047	40 ft	7,185 lb
MEC 4555 SEAC	45 ft	7,660 lb



## ROUGH TERRAIN SCISSOR LIFTS

Model	Platform Height	Weight
Skyjack 6832RT	32 ft	7,660 lb
JLG 3394	33 ft	11,910 lb
Genie GS3369RT	33 ft	7,895 lb
JLG 4069	40 ft 3 in	10,558 lb
JLG 4394	43 ft	15,210 lb



## OTHER AERIAL EQUIPMENT

Model	Platform Height
JLC E18MCL	18 ft
JLG 20MVL	19 ft 1 in
Runabout Genie GR20*	20 ft
Towable Genie TZ-34	34 ft
Towable Genie TZ-50	49 ft 6 in
Towable JLG T500J	50 ft 1 in



# AIR EQUIPMENT



## ELECTRIC AND OIL FREE AIR COMPRESSORS

Model	CFM	PSI
Kobelco 200 VSD Oil Free	800	75-135
Kobelco 400 VSD Oil Free	1548	100-150
Kobelco 1550 Diesel Oil Free	1550	135



## DIESEL PORTABLE AIR COMPRESSORS

Model	CFM	PSI
Atlas Copco 185	185	100
Allmand MA185	185	100
Sullair 185	185	100
Atlas Copco XAVS400	400	100 - 200
Sullair 400 HH	400	100 - 200
Sullair 800HH/900H	900	100 - 200
Atlas Copco XAS950	950	100 - 200
Atlas Copco XRVS1000	1000	350 - 500
Atlas Copco XRVS1550	1,550	350 - 500
Atlas Copco XAS1800	1,800	100 - 200



## AIR TOOLS

Model
Atlas Copco 15 lb Chipping Hammer
Atlas Copco 30 - 90 lb Hammer
Air Backfill Tamper / Pogo Stick Tamper
Bulk Air Hose 50 ft
Bulk Airhose Whip Check
Bulk Chisel Bit for Air Hammer
Bulk Moil Point Bit for Air Hammer



**RENT TODAY! 800.277.1212**

# BROOMS



## BROOMS

Model	HP	Weight	Broom Length
Lay-Mor SM300	24 hp	3,100 lb	8 ft
Lay-Mor SM450	74 hp	5,600 lb	8 ft
Smith Challenger SCM 400	74 hp	8,200 lb	7 ft 6 in



# COMPACTION EQUIPMENT

## RAMMERS & TAMPS

Model	Impact Force	In Shoe
Bomag BT50	3,372 lb	13 in x 11 in
MultiQuip MTX60HD	3,060 lb	13.4 in x 10.4 in
MultiQuip MVC82VHW	3,080 lb	17.7 in x 22.4 in
WP1550AW	3,375 lb	19.6 in x 22.8 in



## PNEUMATIC ROLLERS

Model	HP	Weight	Compaction Width
Weiler CT3	36 hp	5,000 lb	60 in
CW16 Roller	100.5 hp	11,464 lb	68 in



## SOIL & VIBRATORY COMPACTORS

Model	HP	Weight	Compaction Width
CS34 Smooth Vibratory Drum Roller	74 hp	9,799 lb	50 in
CP 323/CP34 Padfoot Roller	83 hp	10,190 lb	50 in
CS7	99.8 hp	16,276 lb	66 in
CP433/CP44 Padfoot Vibratory Roller	100 hp	16,832 lb	66 in
CS44 Smooth Vibratory Drum Roller	100 hp	15,961 hp	66 in
CS10GC	120.7 hp	12,853 lb	84 in
CS11GC	120.7 hp	13,453 lb	84 in
CP54/CP56 Padfoot Vibratory Roller	157 hp	25,707 lb	84 in
CS54/56 & CS64/66 Smooth Drum Roller	157 hp	25,346 lb	84 in
815 Soil Compactor	248 hp	49,353 lb	-



## TANDEM VIBRATORY ROLLERS

Model	HP	Weight	Compaction Width
Weiler C303	24 hp	5,700 lb	38 - 44 in
CB1.7 Double Drum	24.7 hp	3,538 lb	35 in
CB1.8 Double Drum	24.7 hp	3,825 lb	39 in
CB24 Double Drum	36.2 hp	6,003 lb	47 in
CB34/CB34XW Double Drum	48.8 hp	8,155 lb	51 in
CB7 Double Drum	100 hp	19,015 lb	59 in
CB10 Double Drum	120 hp	21,638 lb	67 in
CB13 Double Drum	142 hp	27,557 lb	79 in



**RENT TODAY! 800.277.1212**





**BOMAG**  
FAYAT GROUP



## WALK-BEHIND ROLLERS

Model	Centrifugal Force	Weight	Compaction Width
BMP8500	16,188 lbf	3,516 lb	24 in or 33 in



# CONCRETE PRODUCTS



## CONCRETE BUGGIES

Model	Size	Power	Maximum Load
Whiteman WBH-16EF	16 cubic ft	11.9 hp	2,500 lb
Toro MBX 2500	16 cubic ft	25 hp	2,500 lb
Multiquip TuffTruk TB12PE	5.5 cubic ft	750W / 24V	1,100 lb



## CONCRETE EQUIPMENT

Make	Model
Diamond Products	DK12 Hand Held Core Drill
Diamond Products	Core Drill with stand
Diamond Products	1 in - 10 in Core Bit
Diamond Products	14 in - 36 in Concrete & Asphalt Blades
Diamond Products	14 in Cut off Saw - Hand Held
Husqvarna	K770 14" Saw
Husqvarna	FS5000D 36" Walk-behind Saw
Diamond Products	26 in Walk-behind Saw Clipper
Core Cut	26 in Core Cut Concrete Saw
Makita	HM1812X3 70lb Electric Breaker
Wacker	Concrete Vibrator 2.5 hp



# EARTH MOVING EQUIPMENT

## BACKHOE LOADERS

Model	HP	Weight	Dig Depth
415	74 hp	16,279 lb	14 ft
416	87 hp	14,881 lb	14 ft 3 in
420	93 hp	15,201 lb	14 ft 4 in



## WALK-BEHIND TRACK LOADER UP TO 600 LB

Model	HP	Operating Capacity	Width	Weight
Toro TX-1000	25 hp	1,000 lb	41 in	2,860 lb
Vermeer S925TX	25 hp	925 lb	36 in	3,595 lb



## COMPACT TRACK LOADERS 2,000 - 2,399 LB

Model	HP	Lift Capacity - 50%	Width	Weight
239D	65.8 hp	2,050 lb	69 in	7,289 lb
249D	65.8 hp	2,300 lb	69 in	7,685 lb



## COMPACT TRACK LOADERS 2,400 - 2,999 LB

Model	HP	Lift Capacity - 50%	Width	Weight
255	74.3 hp	2,499 lb	69.3 in	9,578 lb
259D	73.2 hp	2,900 lb	69 in	8,945 lb
265	74 hp	2,823 lb	75.8 in	10,492 lb
279D	72.9 hp	2,935 lb	78 in	9,893 lb



## COMPACT TRACK LOADERS 3,000 & ABOVE

Model	HP	Lift Capacity - 50%	Width	Weight
289D	72.9 hp	3,800 lb	78 in	10,533 lb
299D	98 hp	4,970 lb	78 in	11,464 lb
299D XE	110 hp	5,085 lb	76 in	11,756 lb



**RENT TODAY! 800.277.1212**

## DOZERS 90 - 129 HP

Model	HP	Blade Width	Blade Capacity
D3K LGP	80 hp	124 in	2.17 yd3
D4K LGP	92 hp	124 in	2.42 yd3
D4K XL	92 hp	109.5 in	2.59 yd3
D5K LGP	104 hp	126.7 in	3.06 yd3*
D5K XL	104 hp	109.5 in	2.86 yd3*

\* 3D options available



## DOZERS 130 - 159 HP

Model	HP	Blade Width	Blade Capacity
D6K*	130 hp	12 ft	4.38 yd3*
D6K XL	130 hp	10 ft 6 in	4.01 yd3*
D6N	150 hp	13 ft 5 in	4.13 yd3*
D6N XL	150 hp	10 f 4.2 in	4.16 yd3

\* 3D options available



## DOZERS 160 - 320 HP

Model	HP	Blade Width	Blade Capacity
D6T LGP	230 hp	13 ft 7 in	6.57 yd3
D6T XL	230 hp	10 ft 7 in	7.26 yd3
D8T XL	317 hp	12 ft 9 in	11.4 yd3

## DOZERS NOMENCLATURE CHANGE



**D1**

D3K2  
D3K

55 kW +

**D2**

D4K2  
D4K

65 kW +

**D3**

D5K2  
D5K

75 kW +

**D4**

D6K2  
D6K

95 kW +

**D5**

D6N  
D5R2

115 kW +

**D6**

D6T  
D6R2

150 kW +

**D7**

D7E  
D7R

180 kW +

**D8**

D8T  
D8R

235 kW +

**D9**

D9T  
D9R

305 kW +

**D10**

D10T2

450 kW +

**D11**

D11T

635 kW +

# EARTH MOVING EQUIPMENT

## EXCAVATORS 2,000 - 3,999 LB

Model	HP	Max Operating Weight	Digging Depth	Width
300.9D	13 hp	2,061 lb	5 ft 8 in	2 ft 4.8 in
301.5C	17.7 hp	3,042 lb	7 ft 3 in	2 ft 5 in
301.7D	17.7 hp	3,550 lb	7 ft 3 in	3 ft 3 in
301.8	21 hp	4,473 lb	8 ft 4 in	3 ft 3 in

\*Digging Depth with standard stick



## EXCAVATORS 4,000 - 5,999 LB

Model	HP	Max Operating Weight	Digging Depth	Width
302D	17.7 hp	4,872 lb	7 ft 11 in	4 ft 6 in
302.7D CR	20.7 hp	6,239 lb	8 ft 4 in	5 ft 1.8 in

\*Digging Depth with standard stick



## EXCAVATORS 6,000 - 8,999 LB

Model	HP	Max Operating Weight	Digging Depth	Width
303E CR	23.5 hp	7,790 lb	9 ft	5 ft
303.5E CR	23.5 hp	8,580 lb	9 ft 6 in	5 ft 10 in
304E CR	40.2 hp	8,996 lb	10 ft 3 in	6 ft 5 in

\*Digging Depth with standard stick



## EXCAVATORS 9,000 - 13,999 LB

Model	HP	Max Operating Weight	Digging Depth	Width
305E CR	40.2 hp	11,443 lb	10 ft 9 in	6 ft 6 in
305.5E CR	44.1 hp	11,958 lb	11 ft 4 in	6 ft 6 in

\*Digging Depth with standard stick



## EXCAVATORS 14,000 - 29,999 LB

Model	HP	Max Operating Weight	Digging Depth	Width
306 CR	55.9 hp	15,766 lb	12 ft 1 in	6 ft 6 in
307	50.6 hp	16,028 lb	13 ft 4 in	7 ft 3 in
307.5	54.8 hp	17,905 lb	15 ft 3 in	7 ft 6 in
308 CR	69.5 hp	20,077 lb	13 ft 7 in	7 ft 7 in
309 CR	69.5 hp	21,091 lb	15 ft 2 in	8 ft 1 in
310	69.5 hp	22,451 lb	17 ft 1 in	8 ft 1 in

\*Digging Depth with standard stick

**RENT TODAY! 800.277.1212**

## EXCAVATORS 30,000 - 49,999 LB

Model	HP	Max Operating Weight	Digging Depth	Reach
313	108 hp	30,400 lb	19 ft 9 in	29 ft 4 in
315 CR	108 hp	34,000 lb	19 ft 6 in	28 ft 6 in
316	117 hp	39,900 lb	20 ft	28 ft 9 in
317	130 hp	40,200 lb	21 ft	28 ft 10 in

\*Digging Depth with standard stick



## EXCAVATORS 50,000 - 69,999 LB

Model	HP	Max Operating Weight	Digging Depth	Reach
320	172 hp	50,265 lb	22 ft 1 in	30 ft 9 in
323	172 hp	56,200 lb	22 ft 1 in	32 ft 4 in
325 CR	172 hp	63,493 lb	22 ft	32 ft
326	201 hp	63,934 lb	22 ft 4 in	35 ft 2 in
330	273 hp	68,125 lb	23 ft 9 in	35 ft

\*Digging Depth with standard stick



## EXCAVATORS 70,000 - 120,000 LB

Model	HP	Max Operating Weight	Digging Depth	Reach
336	311 hp	81,900 lb	24 ft 7 in	36 ft 2 in
349	424 hp	105,200 lb	26 ft 10 in	39 ft 9 in

\*Digging Depth with standard stick



## HAMMERS

Model	Energy Class	Machine Compatibility	Blows per Minute
B1	147.5 ft-lbf	300.9 - 301.8	800 - 1,400
B2	213.9 ft-lbf	301.7 - 303.5	700 - 1,200
B4	272.9 ft-lbf	302.5 - 306	600 - 1,100
B6	501.5 ft-lbf	304 - 309	500 - 900
B8	848.2 ft-lbf	306 - 309	400 - 800
B9	958.8 ft-lbf	306 - 309	400 - 800
H35	300.2 ft-lbf	301.4 - 302.4	600 - 1,800
H45	399.8 ft-lbf	301.7 - 302.7	780 - 1,800
H55	599.6 ft-lbf	302.5 - 305.5	600 - 1,680
H65	800.3 ft-lbf	303.5 - 308	720 - 1,740



Model	Energy Class	Machine Compatibility	Blows per Minute
H80	1,000.1 ft-lbf	307 - 312	600 - 1,500
H95	1,500.2 ft-lbf	307 - 312	700 - 1,260
H110s	1,475 ft-lbf	311 - 316	450 - 650
H115s	12,000 ft-lbf	312 - 320	450 - 800
H120s	3,500 ft-lbf	315 - 329	350 - 620
H130s	4,500 ft-lbf	319 - 329	320 - 600
H140s	6,000 ft-lbf	324 - 336	325 - 540
H160s	8,500 ft-lbf	336 - 349	400 - 505
H180s	12,000 ft-lbf	345 - 374	275 - 450

# EARTH MOVING EQUIPMENT

## WHEEL EXCAVATORS

Model	HP	Operating Weight	Digging Depth	Reach
M316	148 hp	36,400 lb	20 ft	26 ft 8 in
M318	169 hp	39,529 lb	20 ft	30 ft 10 in
M320	174 hp	46,740 lb	19 ft 9 in	30 ft 6 in



## MOTOR GRADERS

Model	HP	Weight	Blade
Noram 65E	120 hp	16,900 lb	10 ft - 12 ft
120	145 hp	39,892 lb	12 ft
12	173 hp	33,064 lb	12 ft
140	183 hp	41,868 lb	12 ft
140 GC	196 hp	38,912 lb	12 ft



## SKID STEER LOADERS 1,500 - 1,999 LB

Model	HP	Lift Capacity - 50%	Width	Weight
226	65.8 hp	1,500 lb	59 in	5,705 lb
232D	65.8 hp	1,850 lb	59 in	6,213 lb
236D	73.2 hp	1,800 lb	59 in	6,559 lb



## SKID STEER LOADERS 2,000 LB & ABOVE

Model	HP	Lift Capacity - 50%	Width	Weight
242D	73.2 hp	2,150 lb	66 in	6,980 lb
246D	72.9 hp	2,150 lb	66 in	7,424 lb
262D	72.9 hp	2,700 lb	66 in	8,011 lb



## TRACK LOADERS

Model	HP	Weight	Bucket Capacity
953	148 hp	34,381 lb	2.09 yd <sup>3</sup> / 2.42 yd <sup>3</sup>



**RENT TODAY! 800.277.1212**

## TRENCHERS

Model	HP	Weight	Trench Size
Ditch Witch RT45	49 hp	4,200 lb	52 in depth/6 in wide
Toro RTX16*	16 hp	1,250 lb	3 ft depth/6 in wide

\* Trailer available with rental



## TRUCKS - TIRES

Model	HP	Rated Payload	Weight - Empty
Hydrema 912	131 hp	22,046 lb	19,047 lb
Hydrema 922	314 hp	44,092 lb	36,046 lb
730	511 hp	42 tons	79,521 lb
745	740 hp	45.2 tons	73,634 lb



## TRUCKS - TRACKS

Model	HP	Max Load	Weight - Empty
Morooka MST-800	129 hp	9,480 lb	14,140 lb
Morooka MST-1000VD	132 hp	24,251 lb	35,274 lb
Morooka MST-110CR	186 hp	11,000 lb	16,000 lb
Morooka MST-1500 VD	225 hp	13,890 lb	20,282 lb
Morooka MST-1500 VDR	225 hp	13,890 lb	20,282 lb
Morooka MST-2200	250 hp	22,046 lb	29,762 lb
Morooka MST-2200 VDR	250 hp	22,046 lb	29,762 lb



# EARTH MOVING EQUIPMENT

## WHEEL LOADERS 1.0 - 1.9 YD3

Model	HP	Weight	Bucket Capacity (yd) - GP
906M	73 hp	12,346 lb	1.0 - 1.6 yd3

## WHEEL LOADERS 2.0 - 2.9 YD3

Model	HP	Weight	Bucket Capacity (yd) - GP
908M	68 hp	14,032 lb	1.2 - 2.0 yd3

## WHEEL LOADERS 3.0 YD3 & ABOVE

Model	HP	Weight	Bucket Capacity (yd) - GP
926M	153 hp	28,770 lb	2.5 - 3.2 yd3
930M	164 hp	30,879 lb	2.7 - 3.5 yd3
938M	169 hp	35,104 lb	3.65 yd3
950	211 hp	42,811 lb	4.0 yd3
966	276 hp	51,176 lb	4.19 - 9.68 yd3
972	299 hp	54,871 lb	4.19 - 13 yd3
980	386 hp	66,337 lb	4.19 - 16 yd3



# ELECTRIC EQUIPMENT

## ELECTRIC COMPACT UTILITY LOADER

Model	Width	Operating Capacity	Weight
eDingo 500	30 in	515 lb	2,342 lb



**RENT TODAY! 800.277.1212**





## ELECTRIC DUMPERS

Model	Width	Operating Capacity	Weight
TWINCA ES800	35.5 in	15 CF	1,075 lb



## ELECTRIC EXCAVATORS

Model	Dig Depth	Operating Weight	Weight
CMX18	7.5 ft	3,642 lb	8 hours



## ELECTRIC COMPACT UTILITY LOADER

Model	Width	Operating Capacity	Weight
Sherpa 2-Speed	31 in	595 lb	1,800 lb

Attachments Available: 31 in Buckets, Grapple Buckets and Vacuum Attachment Systems

# LIGHT/SECURITY TOWERS



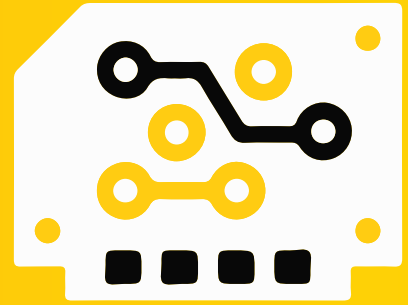
## TOWERS

Model	Height	Specs
Allmand NLGR	23 ft	Four - 350 W LED   228,560 Lumens   3kW Generator   313 hr runtime
Generac MLTS LED Light Tower	23 ft	Four - 320 W LED   188,000 Lumens   2.4kW Generator   165 hr runtime
Wanco Solar Surveillance System	20 ft Mast	Self-contained 1080p HD camera



# TECHNOLOGY

## THAT MAKES A REAL DIFFERENCE



At the Carolina Cat Rental Store, we're constantly upgrading our rental fleet to provide you access to the latest technology. Choose machines from newer, more efficient models equipped with the latest technology to help you increase your productivity and get the job done in less time.



Increase productivity by up to 45% with Cat Grade 3D on Cat excavators and dozers



Up to 80% fewer operator input for use by all experience levels of operators



Achieve grade accuracy to the closest centimeter



### VISIT US ONLINE TO RENT TODAY!



**RENT TODAY! 800.277.1212**



# SITECH HORIZON

SITECH Horizon is an affiliated partner of the Carolina Cat Rental Store. SITECH Horizon is central and western North Carolina's distributor of the most reliable, rugged and complete portfolio of construction technology systems for the heavy equipment and highway contractor. Leverage state-of-the-art technology to ensure precision and accuracy on your job site. An authorized Trimble and Spectra dealership, SITECH Horizon offers technology systems rentals for construction equipment including bases to rovers and full machine control systems.

## MACHINE CONTROL TECHNOLOGY EQUIPMENT RENTAL

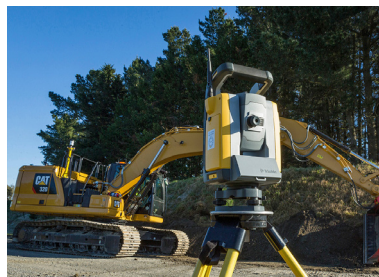
Rent the hardware to keep your 2D or 3D Cat Grade or Earthworks system up and running.



Learn more about our machine product offerings by visiting us online.

## SITE POSITIONING SYSTEM RENTALS

Rent base station, rovers and data collectors



Learn more about our site positioning product offerings by visiting us online.

**MORE INFORMATION CALL US TODAY! 704.644.0660**



# MATERIAL HANDLING

## BIG & JUMBO

Model	Capacity Rating	Tire Type	Fuel
H190-360HD2	19,000 - 36,000 lb	Pneumatic	Diesel
H360-1050 HD/S	36,000 - 105,000 lb	Pneumatic	Diesel



## ELECTRIC SIT-DOWN & STAND UP

Model	Lift Capacity	Power Source	Tire Type
E30-40HDS	3,000 - 4,000 lb	36 volt	EL-COMP
E30-120XN	3,000 - 12,000 lb	36/48 volt	Cushion
J30-40XN	3,000 - 4,000 lb	36/48 volt	Pneumatic
J30-40XNT	3,000 - 4,000 lb	36/48 volt	Pneumatic
J45-120XN	4,500 - 12,000 lb	80 Volt	Pneumatic



## INTERNAL COMBUSTION FORKLIFTS

Model	Lift Capacity	Engine	Tire Type
H40-70FT	4,000 - 7,000 lb	PSI 2.4L Dual Fuel	Pneumatic
H40-60XT	4,000 - 6,000 lb	PSI 2.4L Dual Fuel	Pneumatic
H135-155FT	1,350 - 15,500 lb	PSI 4.3L LPG/Diesel	Pneumatic
H170-190FT	17,000 - 19,000 lb	Kubota 3.8L 55kW/82kW	Pneumatic
H360HD	36,000 lb	Cummins QSB 6.7L Diesel	Pneumatic



## PALLET JACKS

Model	Lift Capacity	Power Source	Category
W45ZHD	4,500 lb	24 Volt	Walkie
W60-80Z	6,000 - 8,000 lb	12/24 Volt	Walkie
B60-80ZHD	6,000 - 8,000 lb	24 Volt	End Rider



**RENT TODAY! 800.277.1212**



OTTAWA

Genie®

## TELESCOPIC FORKLIFTS

Model	Load Capacity	Max Lift Height	Max Forward Reach
TH255	5,500 lb	18.3 ft	10 ft 8 in
TL642	6,500 lb	42 ft	30 ft
TL943	9,000 lb	43 ft	31 ft 6 in
TL1055	10,000 lb	55 ft	42 ft 6 in
TL1255	12,000 lb	55 ft	42 ft 6 in
Genie GTH-1544	15,000 lb	44 ft	27 ft 3 in



## TRAILER SPOTTER

Make/Model	Wheelbase	Frame/Chassis	Transmission	Drive Motor
Ottawa T2	126 in	14 in x 4.25 in x 3.5 in	6-Speed Automated	160 kW Electric Drive



## WAREHOUSE FORKLIFTS

Model	Lift Capacity	Power Source	Category
R30XMS3	3,000 lb	24/36 Volt	Order Picker
R30XM3	3,000 lb	24/36 Volt	Order Picker
R30XMA3	3,000 lb	24/36 Volt	Order Picker
R30XMF	3,000 lb	24/36 Volt	Order Picker
N35-40ZRS2	3,000 - 4,500 lb	24/36 Volt	Reach Truck
N30ZDRS2	3,000 - 4,500 lb	24/36 Volt	Reach Truck
N35-45ZR2	3,000 - 4,500 lb	24/36 Volt	Reach Truck
N30-35ZDR2	3,000 - 4,500 lb	24/36 Volt	Reach Truck
W25-30ZA2	2,500 - 4,000 lb	24 Volt	Walkie Stacker
W40ZA	2,500 - 4,000 lb	24 Volt	Walkie Stacker
W20-30ZR	2,500 - 4,000 lb	24 Volt	Walkie Stacker
W25-40ZC	2,500 - 4,000 lb	24 Volt	Walkie Stacker
T5-7AZC	10,000 lb	24 Volt	EL-COMP
LO5.0-7.0T	15,000 lb	24 Volt	EL-COMP



# POWER GENERATION

## FUEL TANKS

Type	Gallons
Portable	250 - 792
Skid	500 - 10,000
Portable DEF Tank	100 132



## PORTABLE GENERATORS

Size	Max Output
3.6 kW	3,600 w
5.5 kW	5,500 w
6.5 kW	6,500 w
7.5 kW	7,500 w
9 kW	9,700 w



## TOWABLE GENERATORS

Size	Dimension	Weight
20 kW	78 in x 32 in	2,400 lb
20 kW Hybrid	40 in x 48 in	5,500 lb
30 kW	96 in x 44 in	3,600 lb
50kW	106 in x 65 in	2,877 lb
100 kW	124 in x 74 in	5,800 lb
200 kW	158 in x 44 in	14,000 lb
230 kW	171 in x 59 in	13,690 lb
300 kW	200 in x 61 in	17,000 lb
400 kW	200 in x 61 in	17,000 lb
500 kW	20 ft x 8 ft	32,000 lb
800 kW	30 ft x 8 ft	49,000 lb
1,000 kW	40 ft x 8 ft	49,000 lb
2,000 kW	40 ft x 8 ft	89,000 lb



**RENT TODAY! 800.277.1212**

**LOAD BANKS**

Specs
Reactive and resistive, any voltage, 100 kW - 5,000 kW
Ultra compact weather proof enclosures
Programmable with printed documentation



# TEMPERATURE CONTROL

**TEMPERATURE CONTROL**

Type	Mount Type	Specs
Chillers	Skid or Trailer	30 - 510 tons capacity rating
Air Conditioners	Skid or Trailer	1 - 80 tons capacity rating
Heaters	Skid or Trailer	Indirect, direct & electric
Dehumidifiers	Skid or Trailer	2,500 CFM or 5,000 CFM



## ACCESSORIES



**We have all the accessories to pair with your temperature control units:**

- Fuel tanks
- Generators
- Transformers
- Electrical cables
- Cable ramps
- Spot coolers
- Air handlers
- Automatic transfer switches

# ROADWORK EQUIPMENT



## ARROW PANELS & MESSAGE BOARDS

Model
WTSP55-LSA Arrow Board
WTLMB Message Board / Sign



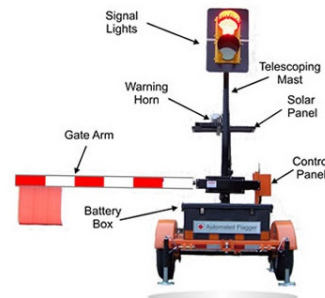
## ASPHALT PAVERS

Model	HP	Weight	Paving Range	Class
Weiler P195	67 hp	13,000 lb	3 ft 7 in - 7 ft	Cart Path Paver
Weiler P265	74 hp	15,500 lb	7 ft 8 in - 14 ft 4 in	Commercial Class Paver
Weiler P385B	100 hp	20,500 lb	8 ft - 15 ft 8 in	Commercial Class Paver
Weiler P395	100 hp	25,000 lb	7 ft 8 in - 15 ft 4 in	Commercial Class Paver
AP600	173 hp	30,522 lb	8 ft 4 in - 16 ft 4 in	Commercial Class Paver
AP655	173 hp	34,356 lb	8 ft 4 in - 16 ft 4 in	Highway Class Paver
AP1000	225 hp	41,985 lb	9 ft 10 in - 19 ft 6 in	Highway Class Paver
AP1055	255 hp	37,398 lb	10 ft - 19 ft 6 in	Commercial Class Paver



## BARRICADES

Model
AF100 Automatic Flagger
Bulk Barrel Reflective Barrier



## COLD PLANERS

Model	HP	Weight	Cutting Width	Cutting Depth
RH2460	62 hp	2,635 lb	24 in	0 - 6 in
PM312	336.6 hp	48,429 lb	48 in	13 in
PM622	630 hp	74,737 lb	88 in	13 in



## ASPHALT ROAD WIDENERS

Model	HP	Weight	Widening
W330 Road Widener	49 hp	14,500 lb	6 ft
W430 Road Widener	74 hp	18,500 lb	8 ft
W530 Road Widener	83 hp	19,500 lb	8 ft

Road Widener SSL Attachment



**RENT TODAY! 800.277.1212**



# OTHER EQUIPMENT



## WATER TRUCKS & TRAILERS

Model	Size
Hydrema 912 Water Truck	2,500 gal
MultiQuip WT5C	500 gal
On Road Water Truck	2,000 gal
Off Road Water Truck	4,000 gal



## UTILITY VEHICLES

Seat Capacity	Fuel Type	Top Speed
2	Diesel	25 mph
5	Diesel	25 mph



## WELDERS

Model	SPECS
MultiQuip 400 amp	14kW of AC Power & 1,144 lb operating weight
Miller 280 amp Boom Lift Welder	Tig Welder, equipped with Skypower



## DESICCANT DRYERS

CFM	Applicator
500 - 3,000	Plant or pipeline drying



## WATER/TRASH PUMPS

Model	SPECS
MultiQuip ST2037 2 in	Pumps liquid up to 120 degrees
MultiQuip QP3TH 3 in	Pumps 396 gal a minute
MultiQuip QP4TH 4in	150 gal a minute
Atlas Copco PAS 66	12V Electric Pump
Atlas Copco PAS 1000	4" pump

# EQUIPMENT WORK TOOLS

---



**LANDSCAPE RAKES**



**MATERIAL  
HANDLING ARMS**



**MULCHERS**



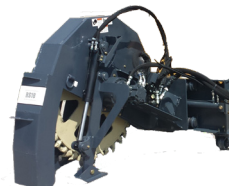
**MULTI-PURPOSE  
BUCKETS**



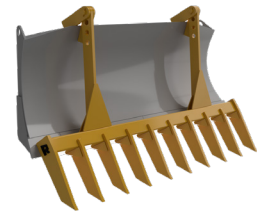
**PICK-UP BROOMS**



**RIPPERS**



**ROADHOG RS18  
ROAD SAWS**



**ROOT RAKES**



**STUMP GRINDER**



**TELEHANDLER  
BOOMS**



**TELEHANDLER  
BOOMS**



**TILLERS**



**TILTROTATORS**



**TORO WORK TOOLS  
TRENCHERS | FORKS | AUGERS  
CULTIVATORS | POWER RAKES**



**TRENCHERS**

**RENT TODAY! 800.277.1212**

# EQUIPMENT WORK TOOLS



**ANGLE BLADES**



**ANGLE BROOMS**



**AUGERS**



**BOX BLADES**



**BRUSHCUTTERS**



**COLD PLANERS**



**COMPACTION WHEELS**



**DOZER BLADES**



**DRUM COMPACTORS**



**FORKS**



**GENERAL PURPOSE  
BUCKETS**



**HAMMERS**



**HARLEY RAKES**



**INDUSTRIAL  
BRUSHCUTTERS**



**INDUSTRIAL GRAPPLE  
BUCKETS**



**INDUSTRIAL GRAPPLE  
FORKS**

# WE ARE WHERE YOU ARE.



▲ **ASHEVILLE**

828.285.9097  
800.277.2070

▲ **BOONE**

828.268.9992  
877.461.2709

▲ **GREENSBORO**

336.297.4490  
800.277.2080

▲ **HICKORY**

828.466.3102  
800.868.0110

▲ **GASTONIA**

\*COMING FALL 2024  
800.277.1212

▲ **MONROE**

704.220.4000  
800.277.4060

▲ **NORTH**

**CHARLOTTE**  
704.921.1178  
800.277.1212

▲ **SOUTH**

**CHARLOTTE**  
704.401.5635  
800.277.1212

▲ **SALISBURY**

704.245.6031  
800.277.1212



Carolina



CALL US FOR ALL YOUR  
RENTAL NEEDS, LARGE OR SMALL!  
800.277.1212 | CARLINACAT.COM/RENTAL